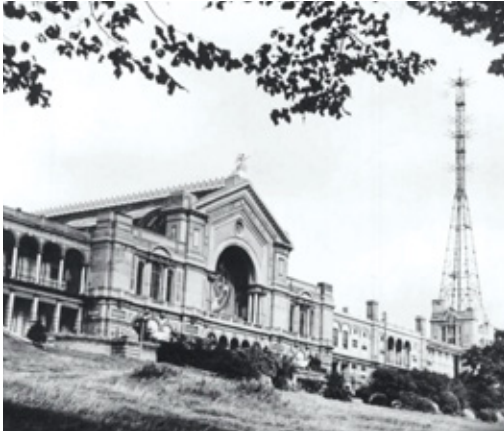


TIMELINE FOR BBC BUILDINGS

- 1922** British Broadcasting Company founded.
Daily radio broadcasts commence from Marconi House, The Strand, London.
- 1923** BBC moves to Savoy Hill Studios at 2 Savoy Hill, London.
- 1927** British Broadcasting Company becomes the British Broadcasting Corporation under its first royal charter.
First season of BBC Promenade concerts from The Queen's Hall, Regent Street, London.
- 1928** Architect Lieutenant-Colonel G Val Myer commissioned to build BBC Broadcasting House in Portland Place, London, the world's first purpose-built radio production centre.
- 1932** Broadcasting House officially opened with sculptures by Eric Gill and studios by Wells Coates and Serge Chermayeff.
First BBC church service broadcast from All Souls, Langham Place.
- 1935** BBC leases eastern part of Alexandra Palace in north London.
- 1936** World's first high-definition television transmissions made from Alexandra Palace.
- 1940** Bomb hits Broadcasting House during 9pm news, killing seven staff.
BBC World Service (then the General Overseas Service) relocates to Bush House in Aldwych, London.
- 1941** Air raids destroy The Queen's Hall.
- 1942** BBC Proms move to the Royal Albert Hall in Kensington, London.
- 1944** Bush House damaged by flying bomb.
- 1949** BBC acquires land at White City in west London and selects Graham Dawbarn of Norman and Dawbarn Architects to design a new home for BBC Television – BBC Television Centre.
- 1950** BBC Lime Grove television studios opened.
- 1956** BBC lease on Alexandra Palace expires.
- 1960** BBC Television Centre opens in Shepherd's Bush, west London, the world's first purpose-built TV 'factory'. Major artworks include a fountain by TB Huxley Jones and a foyer mural by John Piper.
- 1990** New BBC White City building by Scott Brownrigg Turner opens in London W12.
- 1991** Lime Grove Studios close.
- 1998** Final stage of BBC Television Centre, the Stage 6 News Centre, completed. Henry Moore's Reclining Figure installed in reception.
- 2000** BBC announces plans to develop BBC Broadcasting House and appoints architects MacCormac Jamieson Prichard.
- 2001** BBC Property Partnership with Land Securities Trillium signed.



Alexandra Palace 1946



Broadcasting House 1937



Television Centre 1961

- Feb 2001** Architects Building Design Partnership appointed for The Mailbox.
- Sep 2001** BBC Media Village development begins at White City, London W12.
- May 2001** David Chipperfield Architects appointed for Pacific Quay development.
- Mar 2002** Work begins on The Mailbox in Birmingham.
- Nov 2002** Work begins on BBC Broadcasting House site.
- Nov 2003** Foreign Office Architects win competition to design The Music Box at White City.
- May 2004** BBC Media Village at White City opens.

Projections

- Summer 2004** Construction work begins on Pacific Quay
- Sep 2004** Official opening of The Mailbox.
- Jun 2005** First phase of BBC Broadcasting House completed (refurbishment of original building), housing BBC Radio and Music.
- Autumn 2007** Completion of Pacific Quay in Glasgow.
- 2008** Second phase of BBC Broadcasting House completed (new extension), creating the largest live newsroom in the world and a new, combined home for BBC News and BBC World Service.